

**Oakland Community College
HUM 1900 Credits by Campus
1999-00 through 2003-04**

HUM 1900 Credits by Campus (One-Tenth Day):

	1999-2000	2000-2001	2001-2002	2002-2003	2003-2004	5 Year % Change
College-Wide	1,491	1,497	1,578	1,751	1,898	27.3%
Auburn Hills	479	483	565	612	677	41.3%
Highland Lakes	258	264	273	290	289	12.0%
Highland Lakes Extension Clarkston High School (HC)	19					-100.0%
Highland Lakes Extension Walled Lake Central High School (HM)	21					-100.0%
Orchard Ridge	269	346	295	370	463	72.1%
Royal Oak / Southfield*	445	404	445	479	469	5.4%

* Prior to Colleague, Royal Oak and Southfield data were combined. During the 2002-03 and 2003-04 academic years, HUM 1900 sections were assigned to the Royal Oak Campus.

**Oakland Community College
HUM 1900 Credits by Campus
1999-00 through 2003-04**

HUM 1900 Credits by Campus (One-Tenth Day):

	1999-2000	2000-2001	2001-2002	2002-2003	2003-2004	5 Year % Change
College-Wide	1,491	1,497	1,578	1,751	1,898	27.3%
Auburn Hills	479	483	565	612	677	41.3%
Highland Lakes	258	264	273	290	289	12.0%
Highland Lakes Extension Clarkston High School (HC)	19					-100.0%
Highland Lakes Extension Walled Lake Central High School (HM)	21					-100.0%
Orchard Ridge	269	346	295	370	463	72.1%
Royal Oak / Southfield*	445	404	445	479	469	5.4%

* Prior to Colleague, Royal Oak and Southfield data were combined. During the 2002-03 and 2003-04 academic years, HUM 1900 sections were assigned to the Royal Oak Campus.

final

Oakland Community College
HUM 1900 Credits by Campus
1999-00 through 2003-04

HUM 1900 Credits by Campus (One-Tenth Day):

	1999-2000	2000-2001	2001-2002	2002-2003	2003-2004	5 Year % Change
College-Wide	1,491	1,497	1,578	1,751	1,898	27.3%
Auburn Hills	479	483	565	612	677	41.3%
Highland Lakes	258	264	273	290	289	12.0%
Highland Lakes Extension Clarkston High School (HC)	19					-100.0%
Highland Lakes Extension Walled Lake Central High School (HM)	21					-100.0%
Orchard Ridge	269	346	295	370	463	72.1%
Royal Oak / Southfield*	445	404	445	479	469	5.4%

* Prior to Colleague, Royal Oak and Southfield data were combined. During the 2002-03 and 2003-04 academic years, HUM 1900 sections were assigned to the Royal Oak Campus.

**Oakland Community College
HUM 1900 Credits by Campus
1999-00 through 2003-04**

HUM 1900 Credits by Campus (One-Tenth Day):

	College-Wide	Auburn Hills	Highland Lakes	Highland Lakes Extension Clarkston High School (HC)	Highland Lakes Extension Walled Lake Central High School (HM)	Orchard Ridge	Royal Oak / Southfield	
1999-2000	1,491	479	258	19	21	269	445	1,491
2000-2001	1,497	483	264			346	404	1,497
2001-2002	1,578	565	273			295	445	1,578
2002-2003	1,751	612	290			370	479	1,751
2003-2004	1,898	677	289			463	469	1898

Header

5% Change

HUM 1900 Credits by Campus (One-Tenth Day):

	1999-2000	2000-2001	2001-2002	2002-2003	2003-2004
College-Wide	1491	1497	1578	1751	1898
Auburn Hills	479	483	565	612	677
Highland Lakes	258	264	273	290	289
Highland Lakes Extension Clarkston High School (HC)	19				
Highland Lakes Extension Walled Lake Central High School (HM)	21				
Orchard Ridge	278 269	346	295	370	463
Royal Oak / Southfield	445	404	445	479	469

Source

Date

Oakland Community College
HUM 1900 Credits by Campus
1999-00 through 2003-04

DRAFT

HUM 1900 Credits by Campus (One-Tenth Day):

	College-Wide	Auburn Hills	Highland Lakes	Highland Lakes Extension Clarkston High School (HC)	Highland Lakes Extension Walled Lake Central High School (HM)	Orchard Ridge	Royal Oak / Southfield
1999-2000	1,491	479	258	19	21	269	445
2000-2001	1,497	483	264			346	404
2001-2002	1,578	565	273			295	445
2002-2003	1,751	612	290			370	479
2003-2004	1,898	677	289			463	469

Frequencies ~ 1999-2000 HUM 190 Credits_OTD

Statistics

sess1

N	Valid	1491
	Missing	0

sess1

		Frequency	Percent	Valid Percent	Cumulative Percent
Valid	001	588	39.4	39.4	39.4
	002	165	11.1	11.1	50.5
	994	114	7.6	7.6	58.1
	995	624	41.9	41.9	100.0
	Total	1491	100.0	100.0	

need to add up all campus locations by hand.

Frequencies ~ 1999-2000 HUM190 Credits by Campus_OTD

Statistics

loc1

N	Valid	544
	Missing	0

loc1

		Frequency	Percent	Valid Percent	Cumulative Percent
Valid	AH	170	31.3	31.3	31.3
	HC	14	2.6	2.6	33.8
	HL	108	19.9	19.9	53.7
	HM	10	1.8	1.8	55.5
	OR	79	14.5	14.5	70.0
	SR	163	30.0	30.0	100.0
	Total	544	100.0	100.0	

544
 460
 289
 174
 24

 1491

Frequencies

Statistics

loc2

N	Valid	460
	Missing	0

loc2

		Frequency	Percent	Valid Percent	Cumulative Percent
Valid	AH	169	36.7	36.7	36.7
	HC	2	.4	.4	37.2
	HL	80	17.4	17.4	54.6
	HM	8	1.7	1.7	56.3
	OR	61	13.3	13.3	69.6
	SR	140	30.4	30.4	100.0
	Total	460	100.0	100.0	

Frequencies

Statistics

loc3

N	Valid	289
	Missing	0

loc3

		Frequency	Percent	Valid Percent	Cumulative Percent
Valid	AH	88	30.4	30.4	30.4
	HC	3	1.0	1.0	31.5
	HL	47	16.3	16.3	47.8
	HM	2	.7	.7	48.4
	OR	55	19.0	19.0	67.5
	SR	94	32.5	32.5	100.0
	Total	289	100.0	100.0	

Frequencies

Statistics

loc4

N	Valid	174
	Missing	0

loc4

		Frequency	Percent	Valid Percent	Cumulative Percent
Valid	AH	44	25.3	25.3	25.3
	HL	19	10.9	10.9	36.2
	HM	1	.6	.6	36.8
	OR	67	38.5	38.5	75.3
	SR	43	24.7	24.7	100.0
	Total	174	100.0	100.0	

Frequencies

Statistics

loc5

N	Valid	24
	Missing	0

loc5

		Frequency	Percent	Valid Percent	Cumulative Percent
Valid	AH	8	33.3	33.3	33.3
	HL	4	16.7	16.7	50.0
	OR	7	29.2	29.2	79.2
	SR	5	20.8	20.8	100.0
	Total	24	100.0	100.0	

Frequencies

Warnings

No cases were input to this procedure. Either there are none in the working data file or all of them have been filtered out.
This command is not executed.

Frequencies

Warnings

No cases were input to this procedure. Either there are none in the working data file or all of them have been filtered out.
This command is not executed.

Frequencies

Warnings

No cases were input to this procedure. Either there are none in the working data file or all of them have been filtered out.
This command is not executed.

Frequencies

Warnings

No cases were input to this procedure. Either there are none in the working data file or all of them have been filtered out.
This command is not executed.

Frequencies

Warnings

No cases were input to this procedure. Either there are none in the working data file or all of them have been filtered out.
This command is not executed.

Frequencies

Warnings

No cases were input to this procedure. Either there are none in the working data file or all of them have been filtered out.
This command is not executed.

Frequencies

Warnings

No cases were input to this procedure. Either there are none in the working data file or all of them have been filtered out.
This command is not executed.

Frequencies ~ 2000-01 HUM190 Credits_OTD

Statistics

sess1

N	Valid	1497
	Missing	0

sess1

	Frequency	Percent	Valid Percent	Cumulative Percent
Valid 004	98	6.5	6.5	6.5
005	588	39.3	39.3	45.8
011	569	38.0	38.0	83.8
012	242	16.2	16.2	100.0
Total	1497	100.0	100.0	

need to manually add up campus location.

2000-01 HVM 190 Credits by campus
OTD

Frequencies

Statistics

loc1

N	Valid	552
	Missing	0

loc1

	Frequency	Percent	Valid Percent	Cumulative Percent
Valid AH	176	31.9	31.9	31.9
HL	121	21.9	21.9	53.8
OR	113	20.5	20.5	74.3
SR	142	25.7	25.7	100.0
Total	552	100.0	100.0	

552
403
273
179
27
3

Frequencies

Statistics

loc2

N	Valid	463
	Missing	0

loc2

	Frequency	Percent	Valid Percent	Cumulative Percent
Valid AH	152	32.8	32.8	32.8
HL	87	18.8	18.8	51.6
OR	99	21.4	21.4	73.0
SR	125	27.0	27.0	100.0
Total	463	100.0	100.0	

1497

Frequencies

Statistics

loc3

N	Valid	273
	Missing	0

loc3

		Frequency	Percent	Valid Percent	Cumulative Percent
Valid	AH	91	33.3	33.3	33.3
	HL	31	11.4	11.4	44.7
	OR	69	25.3	25.3	70.0
	SR	82	30.0	30.0	100.0
	Total	273	100.0	100.0	

Frequencies

Statistics

loc4

N	Valid	179
	Missing	0

loc4

		Frequency	Percent	Valid Percent	Cumulative Percent
Valid	AH	51	28.5	28.5	28.5
	HL	22	12.3	12.3	40.8
	OR	57	31.8	31.8	72.6
	SR	49	27.4	27.4	100.0
	Total	179	100.0	100.0	

Frequencies

Statistics

loc5

N	Valid	27
	Missing	0

loc5

		Frequency	Percent	Valid Percent	Cumulative Percent
Valid	AH	12	44.4	44.4	44.4
	HL	2	7.4	7.4	51.9
	OR	7	25.9	25.9	77.8
	SR	6	22.2	22.2	100.0
	Total	27	100.0	100.0	

Frequencies

Statistics

loc6

N	Valid	3
	Missing	0

loc6

	Frequency	Percent	Valid Percent	Cumulative Percent
Valid AH	1	33.3	33.3	33.3
HL	1	33.3	33.3	66.7
OR	1	33.3	33.3	100.0
Total	3	100.0	100.0	

Frequencies

Warnings

No cases were input to this procedure. Either there are none in the working data file or all of them have been filtered out.
This command is not executed.

Frequencies

Warnings

No cases were input to this procedure. Either there are none in the working data file or all of them have been filtered out.
This command is not executed.

Frequencies

Warnings

No cases were input to this procedure. Either there are none in the working data file or all of them have been filtered out.
This command is not executed.

Frequencies

Warnings

No cases were input to this procedure. Either there are none in the working data file or all of them have been filtered out.
This command is not executed.

Frequencies

Warnings

No cases were input to this procedure. Either there are none in the working data file or all of them have been filtered out.
This command is not executed.

Frequencies

Warnings

No cases were input to this procedure. Either there are none in the working data file or all of them have been filtered out.
This command is not executed.

2001-02

Statistics

ALL students taking HUM190 classes (FILTER)

N	Valid	1358
	Missing	0

ALL students taking HUM190 classes (FILTER)

	Frequency	Percent	Valid Percent	Cumulative Percent
Valid Enrolled in HUM190 Class	1358	100.0	100.0	100.0

Frequencies

Statistics

loc1

N	Valid	426
	Missing	0

loc1

	Frequency	Percent	Valid Percent	Cumulative Percent
Valid AH	134	31.5	31.5	31.5
HL	82	19.2	19.2	50.7
OR	78	18.3	18.3	69.0
SR	132	31.0	31.0	100.0
Total	426	100.0	100.0	

2001-02

~~1358~~
~~426~~
~~437~~
~~275~~
~~189~~
~~28~~
~~3~~

Frequencies

Statistics

loc2

N	Valid	437
	Missing	0

loc2

	Frequency	Percent	Valid Percent	Cumulative Percent
Valid AH	152	34.8	34.8	34.8
HL	71	16.2	16.2	51.0
OR	90	20.6	20.6	71.6
SR	124	28.4	28.4	100.0
Total	437	100.0	100.0	

426
 437
 275
 189
 28
 3

1358

Statistics

loc3

N	Valid	275
	Missing	0

loc3

	Frequency	Percent	Valid Percent	Cumulative Percent
Valid AH	84	30.5	30.5	30.5
HL	50	18.2	18.2	48.7
OR	69	25.1	25.1	73.8
SR	72	26.2	26.2	100.0
Total	275	100.0	100.0	

Frequencies

Statistics

loc4

N	Valid	189
	Missing	0

loc4

	Frequency	Percent	Valid Percent	Cumulative Percent
Valid AH	67	35.4	35.4	35.4
HL	29	15.3	15.3	50.8
OR	53	28.0	28.0	78.8
SR	40	21.2	21.2	100.0
Total	189	100.0	100.0	

Frequencies

Statistics

loc5

N	Valid	28
	Missing	0

loc5

	Frequency	Percent	Valid Percent	Cumulative Percent
Valid AH	10	35.7	35.7	35.7
HL	3	10.7	10.7	46.4
OR	5	17.9	17.9	64.3
SR	10	35.7	35.7	100.0
Total	28	100.0	100.0	

Frequencies

loc6

N	Valid	3
	Missing	0

loc6

	Frequency	Percent	Valid Percent	Cumulative Percent
Valid AH	2	66.7	66.7	66.7
SR	1	33.3	33.3	100.0
Total	3	100.0	100.0	

Frequencies

Warnings

No cases were input to this procedure. Either there are none in the working data file or all of them have been filtered out.
This command is not executed.

Frequencies

Warnings

No cases were input to this procedure. Either there are none in the working data file or all of them have been filtered out.
This command is not executed.

Frequencies

Warnings

No cases were input to this procedure. Either there are none in the working data file or all of them have been filtered out.
This command is not executed.

Frequencies

Warnings

No cases were input to this procedure. Either there are none in the working data file or all of them have been filtered out.
This command is not executed.

Frequencies

Warnings

No cases were input to this procedure. Either there are none in the working data file or all of them have been filtered out.
This command is not executed.

Frequencies

Warnings

No cases were input to this procedure. Either there are none in the working data file or all of them have been filtered out.
This command is not executed.

Frequencies ~ Spring 2002_HUM1900Creditsbycampus_OTD
 Second try / new syntax including HUM1900 filter

Statistics

LOC.1: Course Location

N	Valid	133
	Missing	0

LOC.1: Course Location

	Frequency	Percent	Valid Percent	Cumulative Percent
Valid AH	69	51.9	51.9	51.9
HL	18	13.5	13.5	65.4
RO	46	34.6	34.6	100.0
Total	133	100.0	100.0	

133
 54
 25
 6
 1
 1

 220

Frequencies

Statistics

LOC.2: Course Location

N	Valid	54
	Missing	0

LOC.2: Course Location

	Frequency	Percent	Valid Percent	Cumulative Percent
Valid AH	33	61.1	61.1	61.1
HL	10	18.5	18.5	79.6
RO	11	20.4	20.4	100.0
Total	54	100.0	100.0	

Frequencies

Statistics

LOC.3: Course Location

N	Valid	25
	Missing	0

LOC.3: Course Location

	Frequency	Percent	Valid Percent	Cumulative Percent
Valid AH	9	36.0	36.0	36.0
HL	9	36.0	36.0	72.0
RO	7	28.0	28.0	100.0
Total	25	100.0	100.0	

Statistics

LOC.4: Course Location

N	Valid	6
	Missing	0

LOC.4: Course Location

	Frequency	Percent	Valid Percent	Cumulative Percent
Valid AH	4	66.7	66.7	66.7
HL	1	16.7	16.7	83.3
RO	1	16.7	16.7	100.0
Total	6	100.0	100.0	

Frequencies

Statistics

LOC.5: Course Location

N	Valid	1
	Missing	0

LOC.5: Course Location

	Frequency	Percent	Valid Percent	Cumulative Percent
Valid AH	1	100.0	100.0	100.0

Frequencies

Statistics

LOC.6: Course Location

N	Valid	1
	Missing	0

LOC.6: Course Location

	Frequency	Percent	Valid Percent	Cumulative Percent
Valid RO	1	100.0	100.0	100.0

Frequencies

Warnings

No cases were input to this procedure. Either there are none in the working data file or all of them have been filtered out.
This command is not executed.

Frequencies

Warnings

No cases were input to this procedure. Either there are none in the working data file or all of them have been filtered out.
This command is not executed.

Frequencies

Warnings

No cases were input to this procedure. Either there are none in the working data file or all of them have been filtered out.
This command is not executed.

Frequencies

Warnings

No cases were input to this procedure. Either there are none in the working data file or all of them have been filtered out.
This command is not executed.

Frequencies

Warnings

No cases were input to this procedure. Either there are none in the working data file or all of them have been filtered out.
This command is not executed.

Frequencies

Warnings

No cases were input to this procedure. Either there are none in the working data file or all of them have been filtered out.
This command is not executed.

OTD

Frequencies ~ 2002-03 HUM 1900 Credits by Campus

Statistics

Course Location

N	Valid	1751
	Missing	0

Course Location

		Frequency	Percent	Valid Percent	Cumulative Percent
Valid	AH	612	35.0	35.0	35.0
	HL	290	16.6	16.6	51.5
	OR	370	21.1	21.1	72.6
	RO	479	27.4	27.4	100.0
	Total	1751	100.0	100.0	

Frequencies: 2002-03 HUM 1900 Credits

OTD

Statistics

		Session	Course Prefix	Course Number
N	Valid	1751	1751	1751
	Missing	0	0	0

Frequency Table

Session

		Frequency	Percent	Valid Percent	Cumulative Percent
Valid	2002/FA	730	41.7	41.7	41.7
	2002/SU	170	9.7	9.7	51.4
	2003/SP	190	10.9	10.9	62.3
	2003/WI	661	37.7	37.7	100.0
	Total	1751	100.0	100.0	

Course Prefix

		Frequency	Percent	Valid Percent	Cumulative Percent
Valid	HUM	1751	100.0	100.0	100.0

Course Number

		Frequency	Percent	Valid Percent	Cumulative Percent
Valid	1900	1751	100.0	100.0	100.0

Frequencies ~ 2003-04 HUM1900_OTD credits by campus

complete file

6/15/04

Statistics

		Course Prefix	Course Number
N	Valid	1898	1898
	Missing	0	0

Frequency Table

Course Prefix

		Frequency	Percent	Valid Percent	Cumulative Percent
Valid	HUM	1898	100.0	100.0	100.0

Course Number

		Frequency	Percent	Valid Percent	Cumulative Percent
Valid	1900	1898	100.0	100.0	100.0

Frequencies

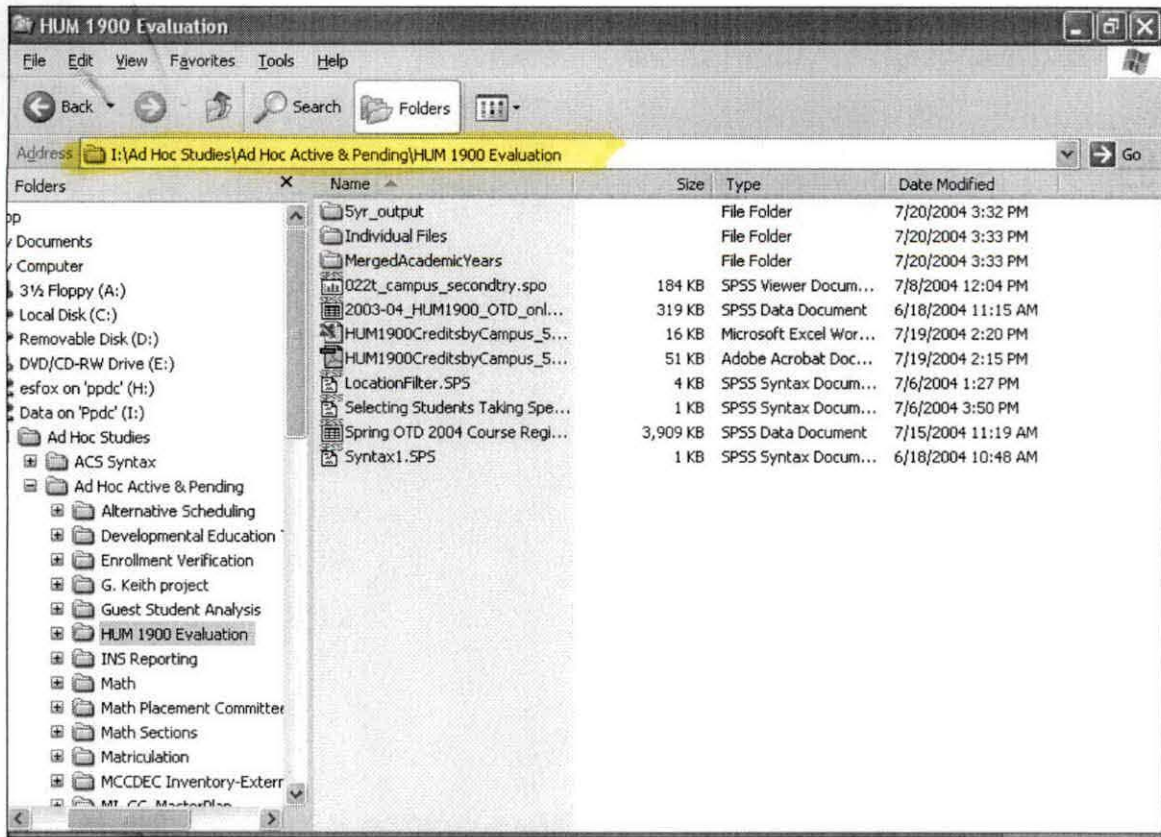
Statistics

Course Location

N	Valid	1898
	Missing	0

Course Location

		Frequency	Percent	Valid Percent	Cumulative Percent
Valid	AH	677	35.7	35.7	35.7
	HL	289	15.2	15.2	50.9
	OR	463	24.4	24.4	75.3
	RO	469	24.7	24.7	100.0
	Total	1898	100.0	100.0	



Office of Institutional Research
Project Summary:

HUM 1900 Enrollment Analysis

ID: 2245
Requester Scavnicki, Gary
Date Requested 15-Jun-04
Expected Completion 15-Jul-04
Actual Completion:
IR Category: Internal Reporting
Project Type: Ad Hoc
Status: Active
Assigned To: Fox, E.

Description: Provide annual credit hour enrollment trends for past five years for HUM 1900 course by campus (previous to Colleague: HUM 190).

FDS, OTD, or EDS?
Just 5 numbers? ✓

Methodology: Can provide findings in table or graphical form, whatever best suits results.

Major Findings:

Here's a
quick one
for you...

Fox, Eleanor

From: Showers, Nancy
Sent: Thursday, June 17, 2004 11:06 AM
To: Fox, Eleanor
Subject: RE: HUM 1900 Enrollment Analysis Clarification

I would use OTD. Yes, one number for each year should suffice . . .

Thanks,

Nancy, ext. 2141

-----Original Message-----

From: Fox, Eleanor
Sent: Thursday, June 17, 2004 10:02 AM
To: Showers, Nancy
Subject: HUM 1900 Enrollment Analysis Clarification

Hi Nancy,

I received your HUM 1900 project...

Would you like me to use FDS, OTD, or EOS for the credit hour numbers???

I'm assuming that all I need to provide is 5 numbers, one for each academic year?

Thanks!
Eleanor

Eleanor Swanke Fox

Office of Institutional Research
Oakland Community College
140. S. Saginaw, 6th Floor
Pontiac, Michigan 48342
Ph: (248) 232-4862
Fax: (248) 232-4860
E-mail: esfox@oaklandcc.edu

Frequencies: Spring 2002 OTD HUM 1900 Credits

Statistics

(pref.1 = 'HUM' & num.1 = 1900) | (pref.2 = 'HUM' & num.2 = 1900) | (pref.3 = 'HUM' & num.3 = 1900) | (pref.... (FILTER)

N	Valid	213
	Missing	0

(pref.1 = 'HUM' & num.1 = 1900) | (pref.2 = 'HUM' & num.2 = 1900) | (pref.3 = 'HUM' & num.3 = 1900) | (pref.... (FILTER)

	Frequency	Percent	Valid Percent	Cumulative Percent
Valid Selected	213	100.0	100.0	100.0

pref. 1 = HUM

num. 1 = 1900

loc. 1 frequency

```
USE ALL.
COMPUTE filter_$(course7 = 'HUM190').
VARIABLE LABEL filter_$(course7 = 'HUM190' (FILTER)".
VALUE LABELS filter_$(0 'Not Selected' 1 'Selected').
FORMAT filter_$(f1.0).
FILTER BY filter_$.
EXECUTE .
FREQUENCIES
  VARIABLES=loc7
  /ORDER= ANALYSIS .
```

```
USE ALL.
COMPUTE filter_$(course8 = 'HUM190').
VARIABLE LABEL filter_$(course8 = 'HUM190' (FILTER)".
VALUE LABELS filter_$(0 'Not Selected' 1 'Selected').
FORMAT filter_$(f1.0).
FILTER BY filter_$.
EXECUTE .
FREQUENCIES
  VARIABLES=loc8
  /ORDER= ANALYSIS .
```

```
USE ALL.
COMPUTE filter_$(course9 = 'HUM190').
VARIABLE LABEL filter_$(course9 = 'HUM190' (FILTER)".
VALUE LABELS filter_$(0 'Not Selected' 1 'Selected').
FORMAT filter_$(f1.0).
FILTER BY filter_$.
EXECUTE .
FREQUENCIES
  VARIABLES=loc9
  /ORDER= ANALYSIS .
```

```
USE ALL.
COMPUTE filter_$(course10 = 'HUM190').
VARIABLE LABEL filter_$(course10 = 'HUM190' (FILTER)".
VALUE LABELS filter_$(0 'Not Selected' 1 'Selected').
FORMAT filter_$(f1.0).
FILTER BY filter_$.
EXECUTE .
FREQUENCIES
  VARIABLES=loc10
  /ORDER= ANALYSIS .
```

```
USE ALL.
COMPUTE filter_$(course11 = 'HUM190').
VARIABLE LABEL filter_$(course11 = 'HUM190' (FILTER)".
VALUE LABELS filter_$(0 'Not Selected' 1 'Selected').
FORMAT filter_$(f1.0).
FILTER BY filter_$.
EXECUTE .
FREQUENCIES
  VARIABLES=loc11
  /ORDER= ANALYSIS .
```

```
USE ALL.
COMPUTE filter_$(course12 = 'HUM190').
VARIABLE LABEL filter_$(course12 = 'HUM190' (FILTER)".
VALUE LABELS filter_$(0 'Not Selected' 1 'Selected').
FORMAT filter_$(f1.0).
FILTER BY filter_$.
EXECUTE .
FREQUENCIES
  VARIABLES=loc12
  /ORDER= ANALYSIS .
```

10
11
12
13
14
15
16
17
18
19
20
21
22
23
24
25
26
27
28
29
30
31
32
33
34
35
36
37
38
39
40
41
42
43
44
45
46
47
48
49
50
51
52
53
54
55
56
57
58
59
60
61
62
63
64
65
66
67
68
69
70
71
72
73
74
75
76
77
78
79
80
81
82
83
84
85
86
87
88
89
90
91
92
93
94
95
96
97
98
99
100

101
102
103
104
105
106
107
108
109
110
111
112
113
114
115
116
117
118
119
120
121
122
123
124
125
126
127
128
129
130
131
132
133
134
135
136
137
138
139
140
141
142
143
144
145
146
147
148
149
150
151
152
153
154
155
156
157
158
159
160
161
162
163
164
165
166
167
168
169
170
171
172
173
174
175
176
177
178
179
180
181
182
183
184
185
186
187
188
189
190
191
192
193
194
195
196
197
198
199
200

Frequencies ~ 2002-03 HUM 1900 Credits by Campus

Statistics

Course Location

N	Valid	1751
	Missing	0

Course Location

	Frequency	Percent	Valid Percent	Cumulative Percent
Valid AH	612	35.0	35.0	35.0
HL	290	16.6	16.6	51.5
OR	370	21.1	21.1	72.6
RO	479	27.4	27.4	100.0
Total	1751	100.0	100.0	

**Frequencies ~ 2003-04 HUM1900_creditsbycampus_OTD
NOT INCLUDING SPRING 2004**

Statistics

	Course Prefix	Course Number	Course Location
N Valid	1734	1734	1734
Missing	0	0	0

Frequency Table

Course Prefix

	Frequency	Percent	Valid Percent	Cumulative Percent
Valid HUM	1734	100.0	100.0	100.0

Course Number

	Frequency	Percent	Valid Percent	Cumulative Percent
Valid 1900	1734	100.0	100.0	100.0

Course Location

	Frequency	Percent	Valid Percent	Cumulative Percent
Valid AH	617	35.6	35.6	35.6
HL	252	14.5	14.5	50.1
OR	425	24.5	24.5	74.6
RO	440	25.4	25.4	100.0
Total	1734	100.0	100.0	

Frequencies ~ 2003-04 HUM1900_OTD credits by campus

Statistics

		Course Prefix	Course Number
N	Valid	1898	1898
	Missing	0	0

Frequency Table

Course Prefix

		Frequency	Percent	Valid Percent	Cumulative Percent
Valid	HUM	1898	100.0	100.0	100.0

Course Number

		Frequency	Percent	Valid Percent	Cumulative Percent
Valid	1900	1898	100.0	100.0	100.0

Frequencies

Statistics

Course Location

N	Valid	1898
	Missing	0

Course Location

		Frequency	Percent	Valid Percent	Cumulative Percent
Valid	AH	677	35.7	35.7	35.7
	HL	289	15.2	15.2	50.9
	OR	463	24.4	24.4	75.3
	RO	469	24.7	24.7	100.0
	Total	1898	100.0	100.0	