

WE'RE ROCHESTER COLLEGE.



1959

CURL UP & STAY AWHILE.

*We'll be honest — we're **REALLY** excited to get to know you.*

And we don't care if we seem a bit overeager, you know, considering that we barely know each other. All of that is about to change anyway because as you open up these pages, we're opening up to you and sharing pretty much everything we could think of about ourselves.

Scout's honor, we have your best interests at heart. We understand that choosing a college or university is a HUGE [with a capital H-U-G-E] decision you're in the process of making. Sure, you can dream about leaving high school in the dust as you embark upon a world of new adventures all on your own, but it's hard to really know what college life looks like.

We ask that you use this book to help set the scene for a 4-year experience at Rochester College, where you will be challenged and supported as you grow up—academically, spiritually, socially and literally.

After this introduction, the only logical thing to do is apply for admission. And since you probably won't be able to wait until next semester to hang with us, go to rc.edu/admissions to schedule a campus visit or sign up for the next Warrior Friday so you can experience all you're about to see. In the meantime, are you ready for us to show you around?



*This thing here is
the code to get into
Rochester College.*

Scan this with your smartphone QR reader and you'll be on your way. If you don't have one, we like 'zappit.'





who we are &
what we're all about

MISSION STATEMENT

Rochester College cultivates academic excellence, principled character, servant leadership, and global awareness through a rigorous educational experience that integrates liberal arts and professional studies within an inclusive Christian heritage.

OUR GOALS

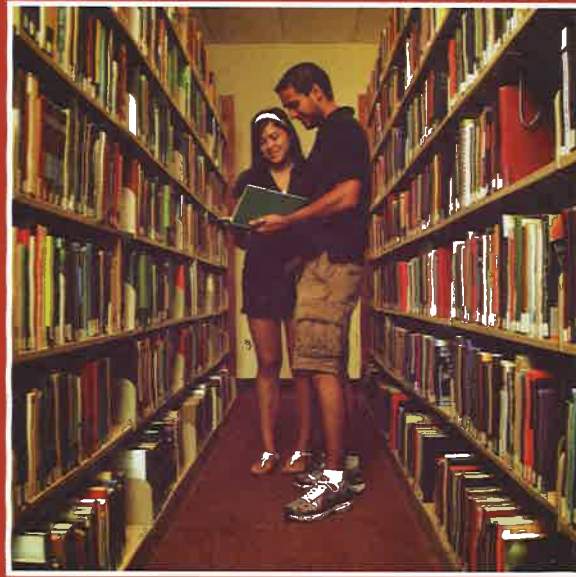
- Establish a learning community where scholarship is valued
- Develop an all-encompassing educational experience
- Facilitate a Christian community that is characterized by the nurturing of spiritual growth
- Provide a vibrant campus community through programming, facilities and amenities

Lib·er·al Arts
n. (plural)

the academic course of instruction at a college intended to provide general knowledge, and comprising the arts, humanities, natural sciences, and social sciences.

IN OTHER WORDS, we'll impart knowledge on a variety of subjects, preparing you for all that life may throw your way... like a [highly likely] career change or an important dinner party with the boss.

MISSION

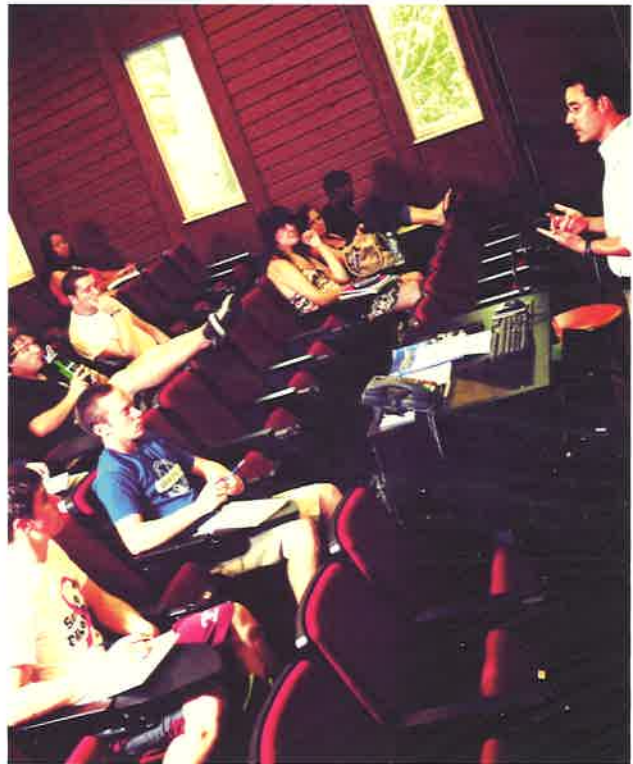


At Rochester College, we believe learning happens most effectively when it's offered in creative formats within a community of peers, and when it focuses on all of life. Around here, the technical term is *Integrated Learning Community*. Others have called this method interesting, invaluable and innovative.



A close-up photograph of a hand holding a pine cone on a forest floor at night. The hand is on the left, with fingers wrapped around the base of the pine cone. The pine cone is in the center, standing upright. The background is dark with several bright, out-of-focus circular lights (bokeh) in shades of yellow and green. The ground is covered in pine needles and small twigs.

we prepare students for the next step—
a lifetime of study & service



It doesn't matter if you decide to change your major a few hundred times because in the end, you'll walk away with an impressive amount of hands-on experience & the knowledge you need to succeed in your chosen field.



we're talking about
your major (not the temperature)

BACHELOR OF ARTS (BA)

English

Tracks available in Literature and Professional Writing

Humanities or Interdisciplinary Studies

With concentrations available in:

- History
- International Studies
- Literature
- Literature and Writing
- Music
- Performing Arts
- Pre-law
- Religion
- Theatre

Interdisciplinary Studies with Honors

With concentrations that are self-designed and approved by a committee

Music

BACHELOR OF BUSINESS ADMINISTRATION (BBA)

Accounting

Business Management

Sports Management

BACHELOR OF SCIENCE (BS)

Behavioral Science

With concentration in Social Work

Biblical Studies

Biology

Christian Ministry

Health Sciences

With tracks available in:

- Pre-Pharmacy
- Pre-Physical Therapy

Interdisciplinary Studies

With concentrations in:

- Those listed above with BA
- Business
- General Science

• Mass Communication

• Mathematics

• Pre-Med

• Professional Writing

• Psychology

Mass Communication

With tracks available in:

- Broadcasting
- Graphic Design
- Media & Communication Arts
- Public Relations

Psychology

Technical and Professional Studies

Incorporates into a BS degree a qualified certificate program in a technical field from another institution

Youth and Family Ministry

TEACHER EDUCATION (BS)

Education, Elementary

- Integrated Science
- Language Arts
- Mathematics
- Social Studies

Education, Secondary

- Biology
- English
- Social Studies
- Mathematics

BACHELOR OF SCIENCE IN NURSING (BSN)

Nursing

RN-BSN

DEGREES



An aerial photograph of a campus. In the foreground, there is a dense, lush green forest. In the background, several large, modern buildings with dark roofs are visible, along with parking lots and roads. The overall scene is bright and sunny.

OUR LITTLE CAMPUS
IS BURSTING WITH
BIG IDEAS, UNLIMITED
POTENTIAL AND FAR-
REACHING POSSIBILI-
TIES. ALL YOU HAVE
TO DO IS *dive in.*

HOME

— *suite* —

HOME

One way to make the most of college life is by living in one of our distinct residential communities, all of which offer convenient access to wireless Internet, computer stations, cable TV and free parking. Our residence halls also offer internal laundry and kitchen facilities, because after all, isn't it about time to give your mom a break?

— *ag*

Alma Gatewood Hall is home primarily to incoming students who are housed in suite-style living with two rooms connected by a common restroom. And in the spirit of oversharing, this hall may or may not have been referred to as "haunted" throughout the years! Don't worry though, it only makes Halloween festivities all the more fun!

— *barbier*

Barbier Hall is for those rocking XY chromosomes (Need a science refresher? We mean males). Often referred to as "Barbierians," this fun group of guys are mostly incoming students who are often found ~~gaming, chilling, rough housing, chatting up the ladies and studying together~~ while living in a residence hall that offers separate rooms and a community restroom.

— *ferndale hoggatt*

Ferndale/Hoggatt Hall has two floors with women's and men's wings, complete with suite-style living that mostly accommodates returning Warriors. Connected by Dearborn Commons, Ferndale/Hoggatt is our largest abode for students, but the building seems like a quaint and cozy home-away-from-home once everyone moves in and each floor becomes its own little community.

— *palmer*

Palmer Hall holds nine apartment-style living units, primarily reserved for married students. Each unit includes one room with an adjoining walk-in closet and bathroom. Additionally, some have kitchen facilities. You can't get much better than having your own place (with individual outdoor access and one reserved parking space), while still being in the heart of campus life.

Students who live on campus also get all the perks of our neighbor, Lifetime Fitness. Membership (included in your financial aid package) allows for 24/7 access to the gym and its many amenities, including hundreds of the latest machines, indoor & outdoor pools with water slides, sport courts, rock climbing caverns, and innovative classes. Commuting students can also purchase a membership at a reduced rate. *So much for the freshman 15!*

THERE'S *[always]* SOMETHING HAPPENING HERE.



KIBO CORNER

It's highly likely that you will have some late nights and early mornings. But as you're [sleep] walking to that 8 a.m. class, stop by the Kibo Corner located inside the Student Center. Serving fair trade Arabica coffee purchased from and roasted by the Source Café in Uganda, the Kibo Corner will help jump start your day. Plus, buying a cup of joe makes a difference to someone 3,000 miles away because 100% of the sale will support various initiatives of the Kibo Group, a team dedicated to changing the poverty and injustice issues plaguing East Africa.

CHAPEL

Chapel is a long-standing tradition around here. We're intentional about taking time out of our day to gather as a community. During 30 minutes of reflection and renewal twice a week, we visit, worship and bond with one another. Our solid line-up of speakers also makes Chapel a time of learning, exploring and growth.

THE CHILL

The Community Hub of Integrated Learning (CHILL) is where our community comes together. The CHILL is where students meet up, hang out and study; where campus organizations host weekly Happy Hour get-togethers, sharing awesome freebies like iced mochas, root beer floats and homemade cookies (YUM!); and where faculty, staff and students rally to engage in intellectual discussion, such as our recent "In Defense of Banned Books" event.

THE ACE LAB

Located, just a few steps from the CHILL, the Academic Center for Excellence (ACE) helps students across every discipline by providing study resources, computers and free tutoring.

CAMPUS MINISTRY

GEO

INTRAMURALS

MUSIC ENSEMBLES

SOCIAL CLUBS

STUDENT GOVERNMENT

THEATRE

THE SHIELD

RESUM



If you're involved in CM, your whole self is being challenged to grow into the person God made you to be. You're serving others by participating in Shack-a-thon, Real Hope or the Global Justice Conference. You're worshipping with your peers at The Offering or Temple. You're a part of something bigger than yourself.

Sure, we'll miss you while you're gone, but even more likely, we'll be extra jealous of the adventures you're having around the world as a participant in the Global Educational Opportunities (GEO) programs. Don't forget to send us a postcard from the national park you're visiting as part of your earth science fulfillment, or from Turkey, China or [insert just about any country in Europe here].

You don't have to be an athletic all-star to play intramurals (although, all-stars are welcome too). And if you're more the "Go! Fight! Win!" type of person, the teams can always use the moral support. So, grab your lucky socks and come out to the volleyball/basketball/flag football/wiffleball/dodgeball/racquetball game that individual students, small groups, social clubs and even the RC employees are playing.

If you can recite at least half a dozen vocal warm-ups and define words like solfège and diminuendo, you should definitely consider being a part of our long-standing tradition of music. Audition for the A Cappella Chorus or the smaller, contemporary performance group, Autumn, who both travel locally, regionally and nationally performing throughout the year. You can also join our lively concert band.

For some, Greek life is quintessentially college. It's without a doubt a great way to meet new people and get involved in campus life. Members of our social clubs pledge each fall and spend the year hanging out and having fun, working on service projects, performing in Celebration and competing in intramurals. Clubs include Sigma Phi Delta Nu, Alpha Kappa Tau, Epsilon Delta Psi, Epsilon Theta Chi and Gamma Omega.

Are you an effective public speaker with a firm handshake and winning smile? All right, forget that. Do you like being a part of change and growth, with a lot of fun in between? If so, join SG when you get here. Once you're elected by your peers, you can be our next student body prez, senator or VP of the activities, public relations, finance or community life committees. To the polls, and may the best man or woman win!

- I have been found all-out-belting many a showtune
- I'm frequently complimented on my authentic sounding British accent
- I'm known for my dramatic flair

Sound familiar? Then it's time to get involved in our theatre department. The bright lights are calling for you to be a part of the fall musical or the several plays we produce each year. Whether you work behind the scenes or have the starring role, you'll have a blast.

Our student publication, *The Shield*, has something to offer everyone. Consisting of a magazine, website and podcast, *The Shield* allows your creative abilities to be truly unleashed. Join the staff or participate as a volunteer, and you will gain valuable media experience. Writers, designers, bloggers, photographers, videographers, social media experts, editors and producers are all welcome. Scholarships are available too.

É FLAIR



warrior athletics **a tradition of excellence**

Rochester College is a member of the National Association of Intercollegiate Athletics and the United States Collegiate Athletic Association. Our athletic program is committed to enriching the lives of our student-athletes by supporting academic dedication and character development on and off the fields or courts.

We boast a tradition of athletic excellence, winning national titles in men's basketball (1989, 1997, 2004, 2005), men's cross-country (1989, 1990), men's golf (2009, 2010), men's soccer (1996, 2006), women's volleyball (1998, 1999) and softball (2011).

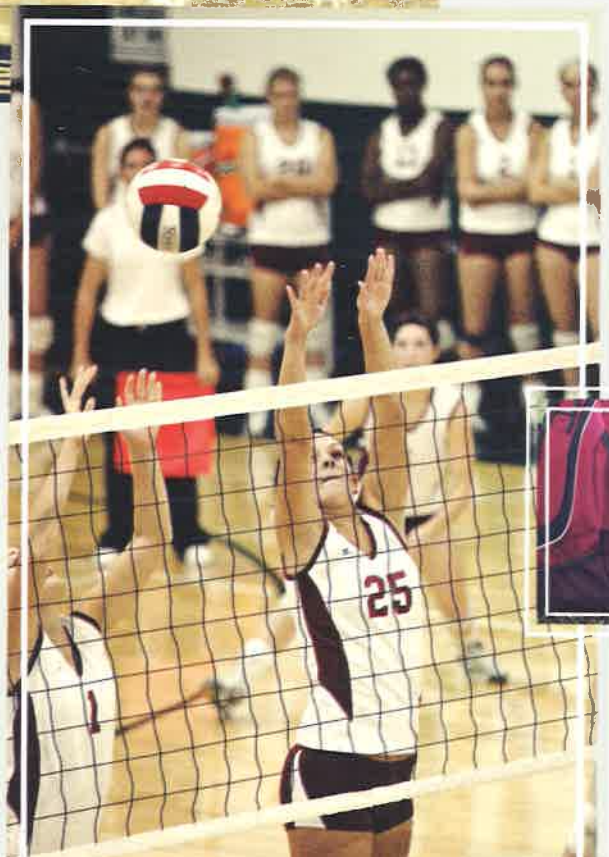


men's sports

Baseball (Varsity & Junior Varsity)
Basketball (Varsity & Junior Varsity)
Golf
Soccer

women's sports

Basketball (Varsity & Junior Varsity)
Golf
Soccer
Softball (Varsity & Junior Varsity)
Volleyball



[for more information on Warrior athletics, visit:
www.rochestercollegewarriors.com]

get the energy that's here.
yourself academically, sp
out loud. prove it to yo

A LOT OF PEOPLE THINK THEY'LL C
WORLD. HOWEVER, THE MENTALIT

somebody. breathe deep
it and chill. create your
pin on something. watch
together. grow. roll the
boat. discover new pl
ways of viewing the wo
change the world. enjoy. s
travel back. make yo
experience do what you lo



channel it. smile. challenge
spiritually and socially. live
yourself. make a friend. hug

GO TO COLLEGE, THEN CHANGE THINGS
AROUND HERE IS, *“why wait?”*

find your place. listen
world. hurry up. put your
pray. hold on tight. serve
windows down. rock the
new things and new
think. go. take a shot
art. travel far and
your mark. have a
live. make yourself at home



LIVES ARE BEING CHANGED DAILY ON OUR CAMPUS.

“ I thought I knew what to expect when I came to college, but I had no idea just how much and how quickly my life would change for the good because I decided to come to RC.

After just a few short weeks on campus, I'm constantly finding myself growing spiritually and emotionally. My life is slowly starting to steer toward a new path with new opportunities and goals.

Ariana Davison

Freshman Biblical Studies major
from Rochester, Michigan





Named one of "America's Top 100 Places to Live," Rochester Hills (and the Metro-Detroit area) offer some serious *grounds for enjoyment.*

*Named by RelocateAmerica.com

We take pride in being situated in the ideal college town. Spend an afternoon here, and you'll see why.

Rochester offers the closeness of a small community, but don't misunderstand — the suburban setting is anything but boring. In our vibrant downtown district, you'll find countless restaurants, shops, hangouts and hot spots. When you feel the need to get off campus, the area's extensive trail system provides unlimited routes for biking, running, hiking or catching up with a friend during a scenic walk along the Clinton River. On the weekends, hit up a local festival or grab some fresh cider and donuts at Yates Cider Mill. And we can't forget to mention that come Christmas time, the place

really lights up! You'll find Main Street aglow in over 1.5 million points of glimmering holiday light during the annual Big, Bright Light show. (See what we did there? Three cheers for Christmas decor puns!)

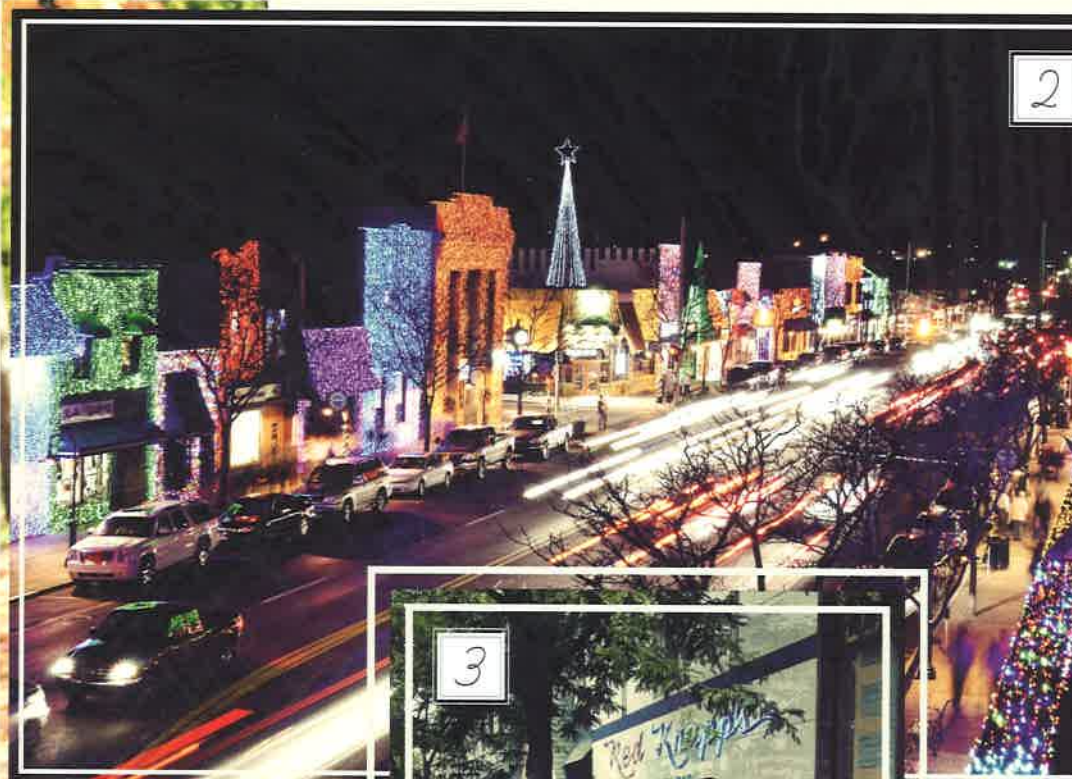
No more than 30 miles out in any direction, you'll find numerous concert venues, museums and professional sports teams. The area also offers outlet malls, outdoor malls and of course, "regular" malls.

In our opinion, we have it all here. And in case we forgot to mention something, we do apologize. But nevertheless, chances are you'll still be able to find it close by.





1



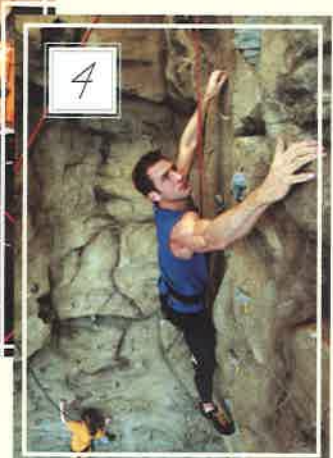
2



3



5



4



6

1. The pathways and trails, both on and off-campus, are beautiful and abundant. // 2. The completely magical Big, Bright Light show in downtown Rochester. // 3. Your problem won't be finding a place to eat. It will be deciding where to go. Pictured is Red Knapp's Dairy Bar, a solid choice. // 4. Located next to campus is the health and wellness megaplex, Life Time Fitness. // 5. The consummate shopper will not be disappointed. This is a shot of The Village of Rochester Hills. // 6. There are shows ALL. THE. TIME. Just one example is Adele at the Royal Oak Music Theatre. // 7. Lions, Tigers....uh, Red Wings and Pistons...oh my! Sports fans, you're well taken care of here.

and now a message from your bright future

ALL YOU NEED TO DO NOW IS APPLY. For more information about admission requirements at RC or to apply for **FREE** online, visit www.rc.edu/admissions.

ADMISSION REQUIREMENTS

- High school graduate
 - Minimum 2.25 high school cumulative GPA
 - Minimum ACT composite score of 18, or minimum SAT total of 880
 - Fewer than 15 semester hours of college credit
- Students who did not graduate high school may be admitted if they earned a minimum GED score of 550 and meet the minimum ACT or SAT score requirements.*

TRANSFER ADMISSION REQUIREMENTS

- Transcript from each college/university attended
 - Minimum 2.25 cumulative GPA for college work
- ACT or SAT scores are not required of students who transfer 16 or more college semester hours.*

ADMISSION PROCEDURE

- 1.) Submit a completed application for undergraduate admission to the Admissions Office with a non-refundable application fee of \$35 (\$100 USD application fee for international students). The application fee for domestic students is waived if you apply online.
- 2.) Have an official transcript sent to Rochester College. If you're in the process of graduating from high school, make arrangements to have a final transcript sent to us. If you've completed college work, you must submit both a final high school transcript and official transcripts from any college/university you have attended. GED graduates must submit an official copy of their GED scores.
- 3.) Submit your ACT or SAT scores if you are entering college for the first time or transferring fewer than 15 semester hours from an accredited college or university. Scores noted on a high school transcript are accepted.
- 4.) Submit a room reservation form. Housing assignments are made on a first-come, first-served basis once application is made.

And most importantly,

- 5.) Start practicing your victory dance//Clear some space on the refrigerator for your acceptance letter//Change your Facebook status to reflect the highly responsible and totally exciting steps you've just made toward your future//Pat yourself on the back.
-

ADMISSIONS



SSIONS

Our #1 goal is to help make all of this a reality.

We can honestly say we want it just as much as you do.

DON'T LET THESE NUMBERS SCARE YOU

We awarded over \$14,986,360 in financial aid during the 2011-12 school year, including grants, loans and scholarships based on eligibility, academic achievement, leadership skills, and other talents and abilities.

For a list of academic merit awards and other discounts, visit www.rc.edu/scholarships.

APPLY FOR AID ASAP

Fill out the Free Application for Federal Student Aid (FAFSA) online at www.fafsa.ed.gov as soon as possible after January 1.

For instructions on the complete financial aid process, visit www.rc.edu/apply-for-aid.

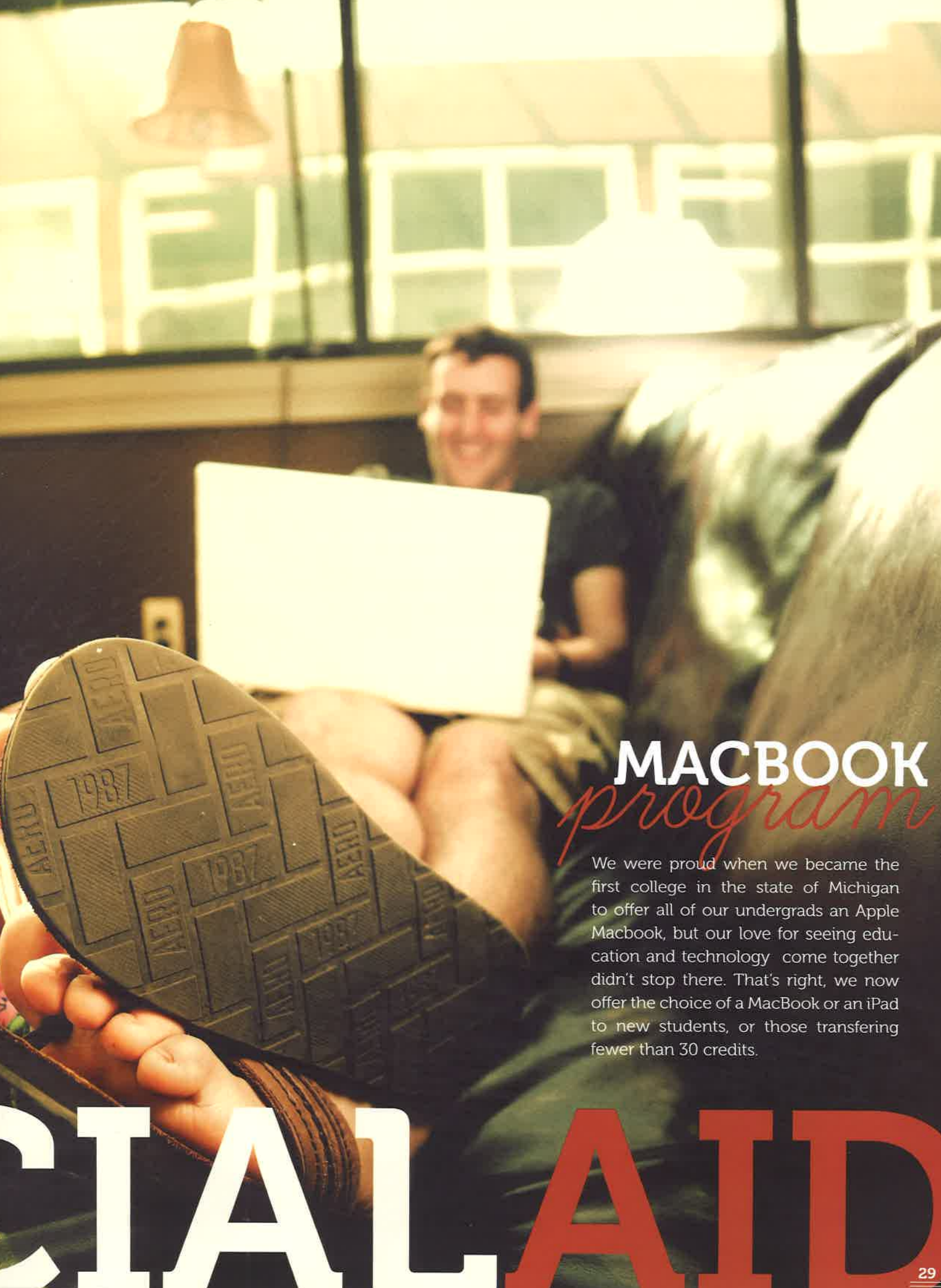
| Annual Tuition | Annual cost for on-campus students | Annual cost for commuter students |
|----------------|------------------------------------|-----------------------------------|
| \$17,394 | \$25,536 | \$18,376 |

*Figures above reflect tuition, room & board and student support fee costs for the 2011-12 school year and are subject to change.

For our traditional program, tuition is charged at a block rate based on 12-18 credit hours per semester. The hourly rate of tuition (under 12 or over 18 credit hours) is \$564 per hour. Annual costs for on-campus and commuter students include tuition and traditional student support fees. The cost of books and supplies is not included in the above figures and varies depending on the courses you take.

VISIT RC.EDU/COSTCALC to estimate the amount of financial aid RC can help with.

FINANC



MACBOOK

program

We were proud when we became the first college in the state of Michigan to offer all of our undergrads an Apple Macbook, but our love for seeing education and technology come together didn't stop there. That's right, we now offer the choice of a MacBook or an iPad to new students, or those transferring fewer than 30 credits.

SPECIAL AID



reca



S

T

E

R

G

E

!

Est 1999

ow?



ROCHESTER COLLEGE

Challenging Academics. Christian Community.

800 WEST AVON ROAD
ROCHESTER HILLS, MI 48307

rc.edu

Rochester College cultivates academic excellence, principled character, servant leadership, and global awareness through a rigorous educational experience that integrates liberal arts and professional studies within an inclusive Christian heritage.

Rochester College is accredited by the Higher Learning Commission of the North Central Association of Colleges and Schools, 30 North LaSalle, Suite 2400, Chicago, Illinois, 60602.

IMAGES BY OLDFIELD PHOTOGRAPHY | ROCHESTER COLLEGE®

