

Investing in the Future of Rochester College

What better way to support the mission of Rochester College than to stabilize it financially? With your help, we will raise \$2.5 million in endowment by generating:

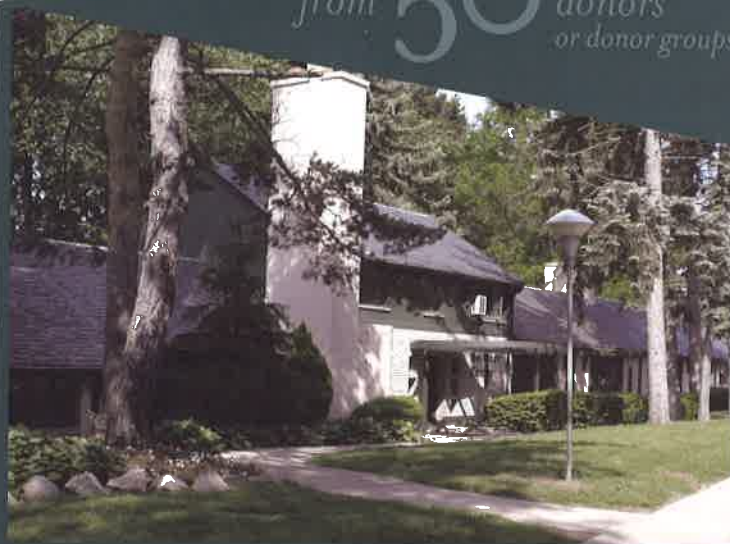
*50 Thousand Dollars from
50 Donors or Donor Groups for another
50 Years of Commitment to Faith and Learning*

Ways to Participate:

- Estate Gift
- Pledge
- Cash Gift
- Gift of Marketable Securities
- Life Insurance

For more information about the Anniversary Endowment Project, contact a member of the Development Team at 800.521.6010 or development@rc.edu

from **50** donors
or donor groups



TREE IN MEMORY OF
JO CHAPMAN

Gifts to the Rochester College Endowment Fund serve to sustain the life of the institution. The college honors these gifts through the Tree of Life project. One may provide a leaf on the beautiful brass tree or stones around the tree for gifts of various levels beginning at \$1000.

<i>Tree of Life Project</i>	<i>Gift Amount</i>
Leaf	\$1,000 to \$4,999
Small Stone	\$5,000 to \$9,999
Medium Stone	\$10,000 to \$24,999
Large Stone	\$25,000 to \$49,999
Large Stone with Replica of the Tree of Life	\$50,000 or more

50 thousand dollars



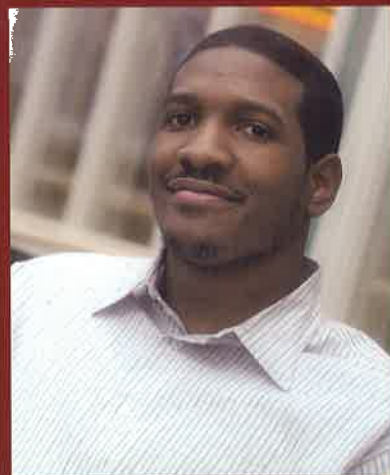
Connect to the Vision: 50th Anniversary Endowment Project

Connect to the Vision is a comprehensive fundraising campaign designed to continue the growth of Rochester College. As we celebrate our fiftieth anniversary, our focus is on building permanent endowment. Permanent endowment is comprised of assets invested to produce revenue for the College.

Of the \$31 million campaign goal, \$10 million is earmarked for endowment gifts. Revenue generated from permanent endowment supports student scholarships, academic programs, and facility maintenance. Often a donor will stipulate how the revenue generated from their gift to the endowment fund will be used. Examples of this include:

- Endowed Academic Departments
- Endowed Professorships or Faculty Chairs
- Endowed Scholarships
- General Endowment

For a complete description of the *Connect to the Vision* campaign, visit www.rc.edu/development.



for 50 more years of Commitment to Faith & Learning

Students arriving on campus in August 2008 will signal the beginning of the fiftieth academic year at Rochester College. Fifty years in any endeavor is a milestone, but our anniversary marks something truly significant—a half-century *Commitment to Faith and Learning*.

We celebrate in two ways: by reflecting on our past and striving toward a bright future. Building endowment at Rochester College will ensure that we move forward with the strength to endure for another fifty years and beyond.



1959

50 COMMITMENT TO
FAITH & LEARNING

2009

ROCHESTER COLLEGE